



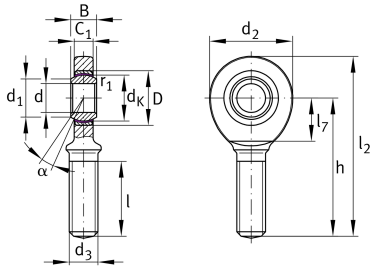
## GAL8-UK

### Rod end

Schaeffler ID:  
0066427130000

Rod end with external thread, left hand thread, maintenance-free, sliding layer: PTFE composite, DIN ISO 12240-4, dimension series E, type M, inner ring curved surface with hard chromium coating, open design

### Technical information



### Main Dimensions & Performance Data

d	8 mm	Bore diameter bearing
d <sub>2</sub>	24 mm	Outer eye diameter
D	16 mm	Outside diameter bearing
l <sub>2</sub>	54 mm	Total length external thread rod
B	8 mm	Width inner ring
C <sub>r</sub>	5,850 N	Basic dynamic load rating, radial
C <sub>0r</sub>	12,900 N	Basic static load rating, radial
	33 g	Weight

### Dimensions

d <sub>K</sub>	13 mm	Ball diameter
d <sub>1</sub>	10.2 mm	Outer flange diameter inner ring
d <sub>3</sub>	M8	Thread size
h	42 mm	Shank Length External thread rod
C <sub>1</sub>	6 mm	Width of the rod end
α	15 °	Tilt angle
l <sub>1</sub>	22 mm	Thread length external thread
l <sub>7</sub>	14 mm	Distance drilling with/shaft start
G <sub>r</sub>	0 - 0,032 mm	Radial Clearance
d <sub>OT</sub>	0 mm	Bore diameter bearing, upper tolerance
d <sub>UT</sub>	-0.008 mm	Bore diameter bearing, lower tolerance
B <sub>OT</sub>	0 mm	Width inner ring, upper tolerance
B <sub>UT</sub>	-0.12 mm	Width inner ring, lower tolerance

### Mounting dimensions

r <sub>1smin</sub>	0.3 mm	Edge Spacing
--------------------	--------	--------------

### Temperature range

T <sub>min</sub>	-50 °C	Operating temperature min.
T <sub>max</sub>	200 °C	Operating temperature max.